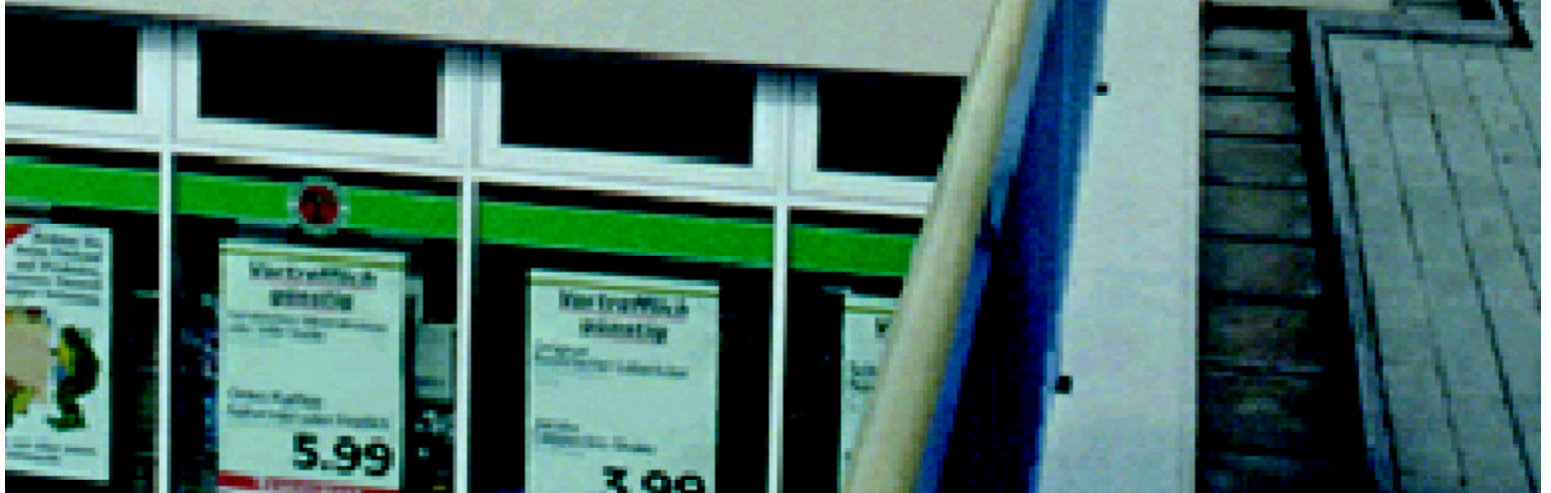




Carlisle Rooftop Planting System

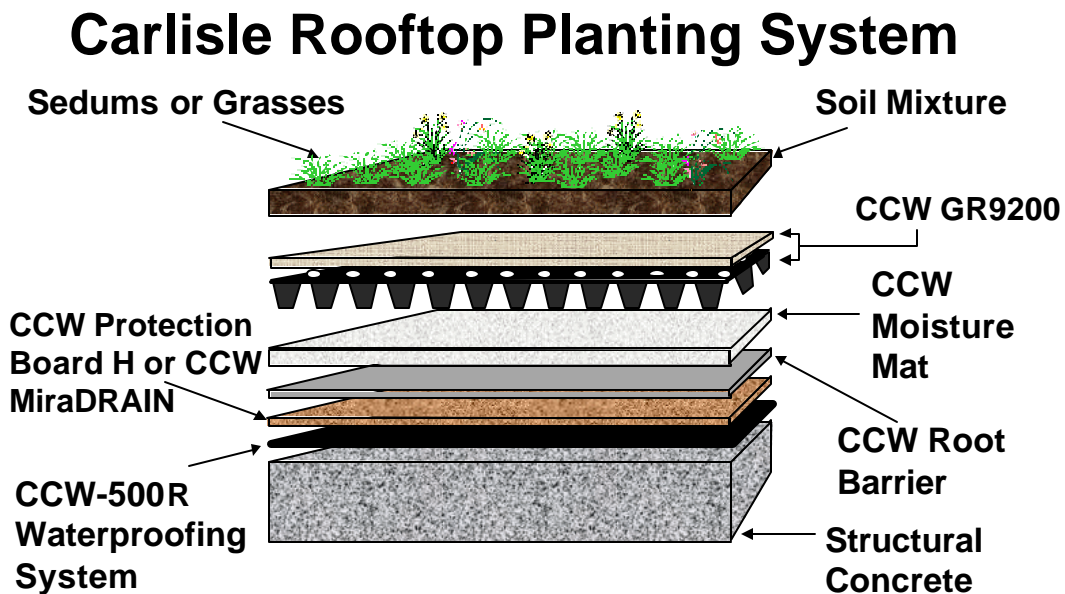
Aesthetics • Environmental Benefits •
Waterproofing

All in one system from a name you can trust.



Now you have the freedom to design an aesthetically pleasing landscaped roof. One that provides the environmental benefits of clean air, reduced water run-off, and energy conservation. With the dependability of Carlisle's Hot Applied Waterproofing System.

This system replaces the conventional exposed roof surface of asphalt, concrete or stone ballast with an engineered system of plants, soil and drainage over a highly reliable waterproofing membrane. The waterproofing protection is the CCW-500R System, a single component monolithic membrane that forms a tough flexible membrane, which adheres tenaciously to a concrete substrate. This low maintenance system also provides ecological benefits, contributing to municipal goals of decreasing roof areas while increasing green spaces.



The System is comprised of the following components:

- The CCW-500R 215 mil Hot Applied Waterproofing System.
- CCW Protection Board H or CCW MiraDRAIN.
- CCW Root Barrier, to prevent root migration into the waterproofing system.
- CCW Moisture Mat, a geotextile designed to hold moisture in the system.
- CCW GR9200, a reservoir and drainage composite designed to retain moisture for plants and provide drainage.
- The Rooftop Planting System is completed by the addition of soil and plants.